

Liv House - Stanwood, Washington

The Liv House, norwegian for “to live”, is a 1492 square foot home strongly influenced by the homeowner and architect’s love of Scandinavian architecture and design. Combining this with the influence of the natural surroundings of the pacific northwest helped nestle the house beautifully on a one acre lot overlooking the Silvana Valley.

The floor plan is small but the programming of the space maximizes every inch. The home is the third in the couples 27 years together- the first being a starter, the second a home to raise a family and this, the final a home to embrace aging in place, health and wellbeing, and a dedication to sustainability.

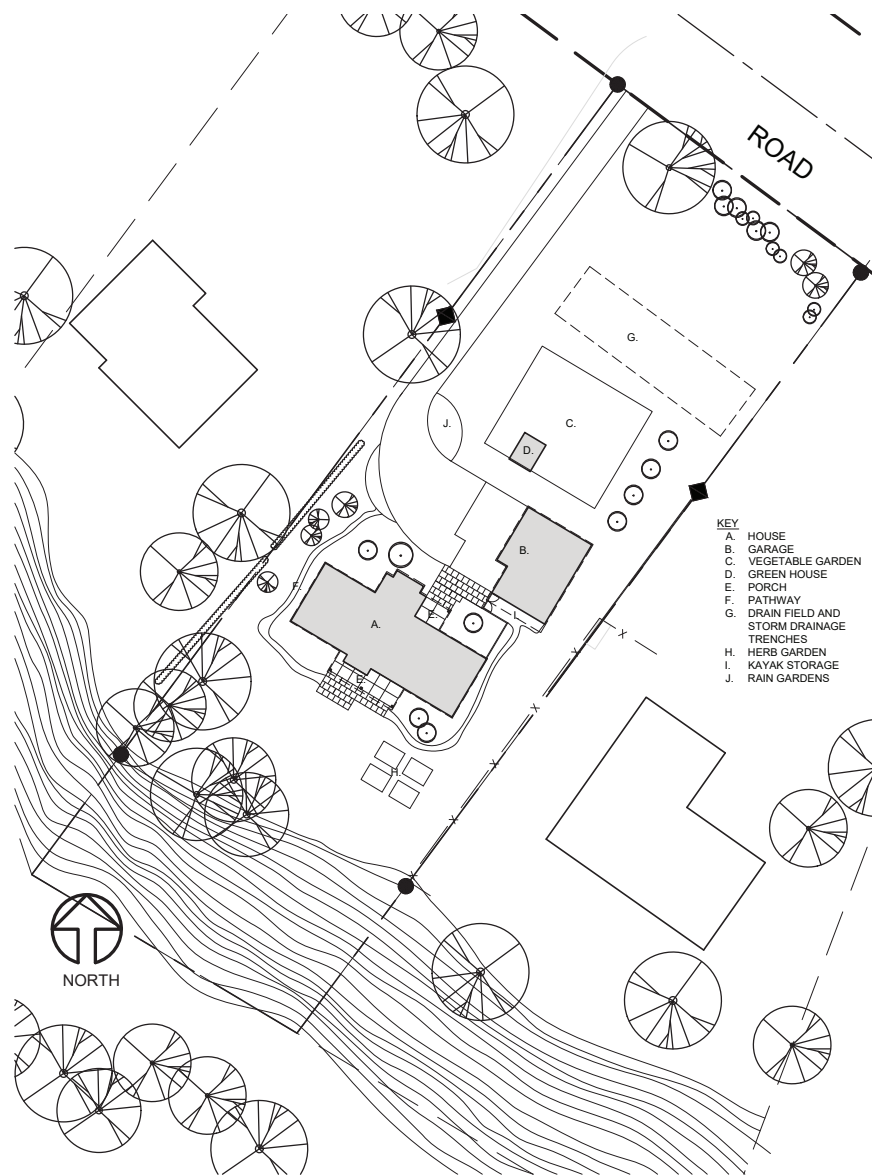
This home needed to be small to save resources but also to live large enough to welcome family and friends. A huge garden to support a passion for an organic, vegan lifestyle. A sauna built

in to the master bath further supports health and wellbeing. The space is centered around a large kitchen and pantry with direct access to the large garden and extensive rain gardens. Built on a cement slab so that gentle and healthy radiant heat maintains a steady temperature at a small expense. A large overhang on the southwest side blocks the summer sun along with the cooling effect of the cement slab, even on the hottest days, it remains cool without air conditioning.

One important goal was to make the house accessible and livable for people with a wide range of abilities. There are no stairs, the cement floors have no thresholds or change in elevation and doorways are generous. The master shower is wheelchair accessible with a handheld shower option.

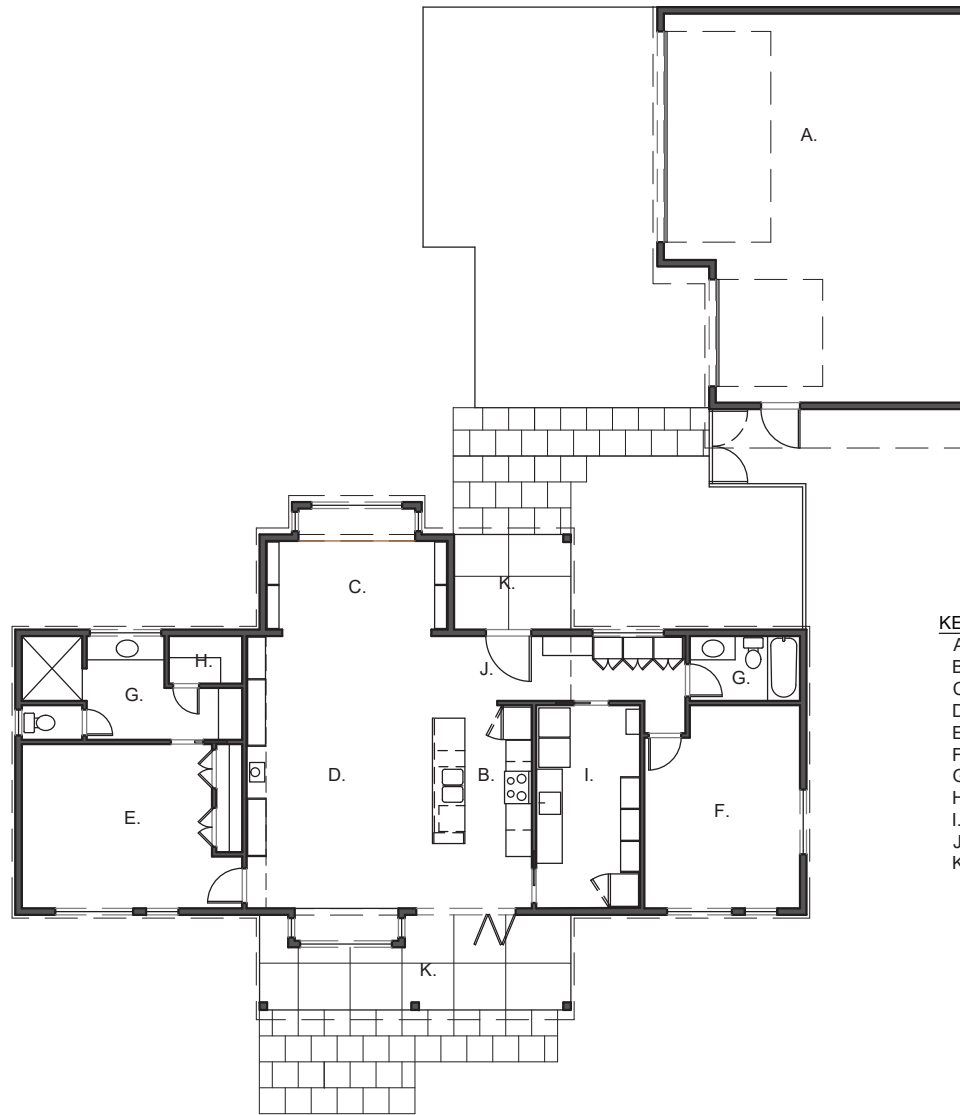
All of the appliances and plumbing fixtures are energy and water conserving and a tight insulation maintains temperature. The house was built with health and longevity in mind - of the residents and the structure. Materials were chosen for their long lasting and environmental impact.

Finally, this small home needed to support hundreds of books and an art collection. Using extensive built-ins, shelves and cabinets meant not having to sacrifice any favorite pieces. A sculptural iron black wall running the length of the living space makes plants and art be seen while the TV fades in to the background.



SITE PLAN





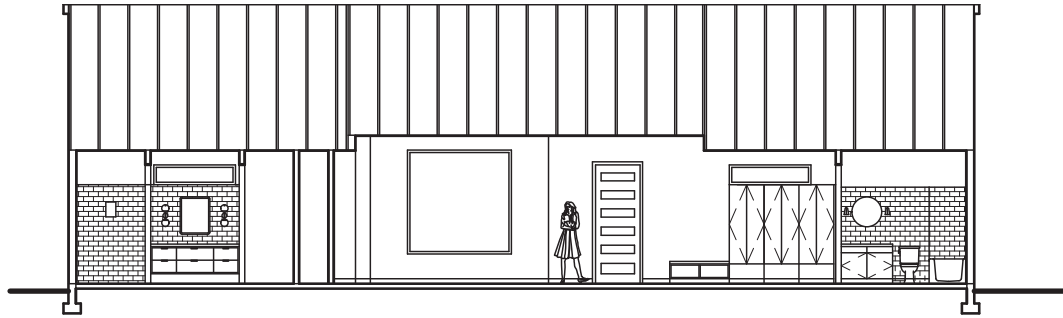
KEY

- A. GARAGE
- B. KITCHEN
- C. DINING/ LIBRARY
- D. LIVING
- E. MASTER BEDROOM
- F. GUEST BEDROOM
- G. BATHROOM
- H. SAUNA
- I. PANTRY/ UTILITY
- J. ENTRY
- K. COVERED PORCHES

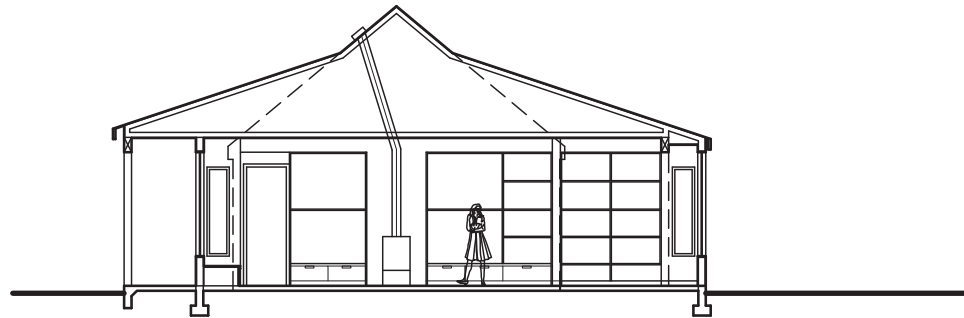


FLOOR PLAN





SECTION LOOKING WEST



SECTION LOOKING WEST

































