

Project Name: Fairhaven Tower

Project Location: Bellingham, Washington

Project Area: 45,000 SF

#### Project Narrative:

Situated on a prominent corner in the center of the Fairhaven Historic District, the design of Fairhaven Tower, along with its iconic clock tower, takes inspiration from the former landmark, the Fairhaven Hotel, which once occupied the site.

The original grand hotel, built in 1890, was eventually destroyed by fire and demolished in 1953 to be replaced by a gas station and hot dog stand.

The owners and design team chose to honor the legacy of the former building and its important location in Fairhaven by re-introducing some elements including the clock tower and exterior balconies.

The design also responds to the strict and multi-layered Fairhaven Historic District design guidelines which includes requirements such as exterior materials, building height limitations, floor-to-floor height requirements, percentage of glazing, exterior canopy coverage, and many, many others.

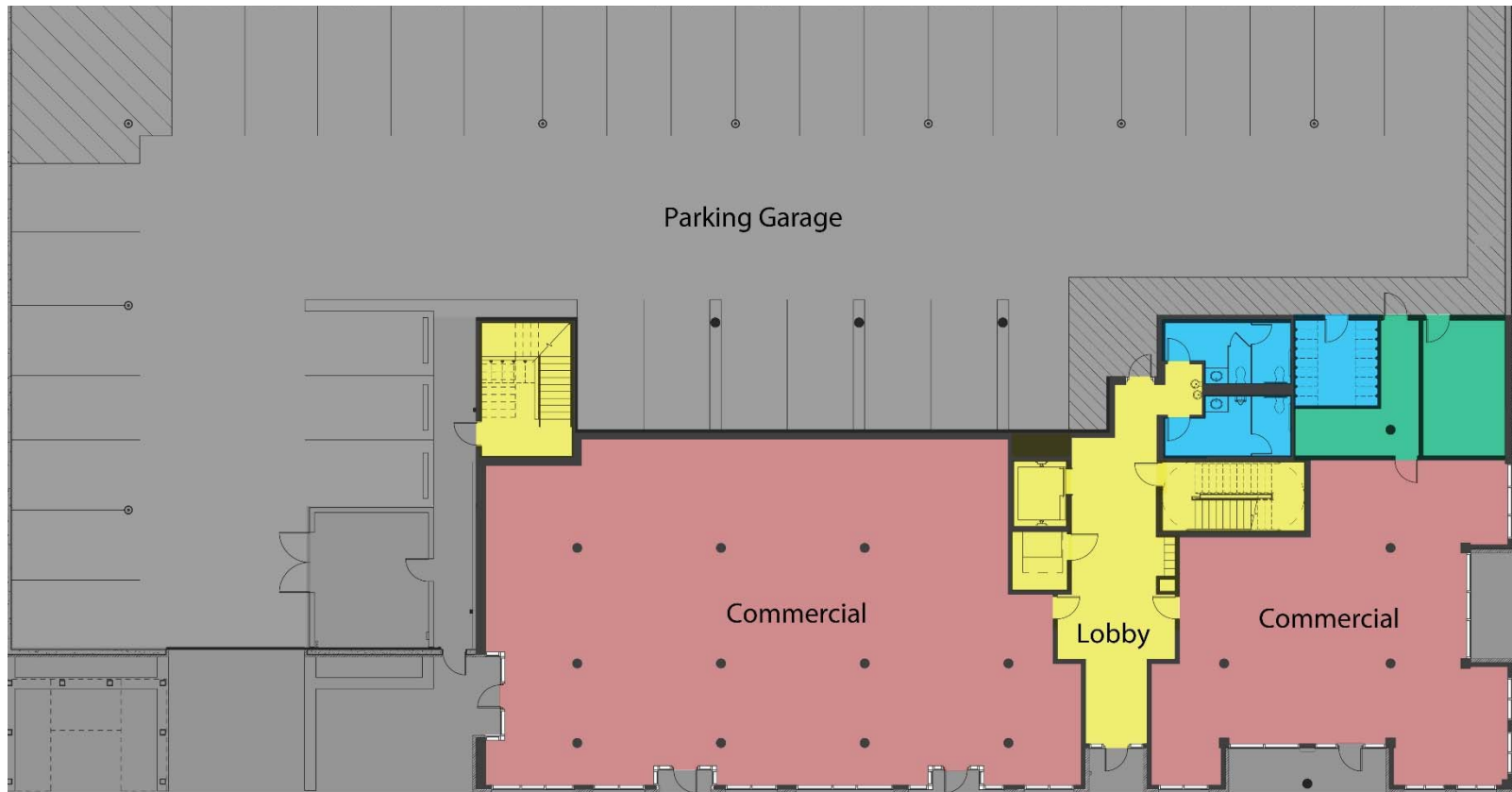
The project is 5 stories with 45,000 SF of mixed use occupancy. The Fairhaven Tower includes 40 residential units ranging from studios to 3-bedroom penthouse units boasting beautiful views of Bellingham Bay, historic Fairhaven and the surrounding hills and mountains. It includes street level commercial spaces and covered parking for all residents and tenants.

The design of the interior of the units was led by the owner who chose a more contemporary style than the exterior design.



Fairhaven Tower  
Site Plan





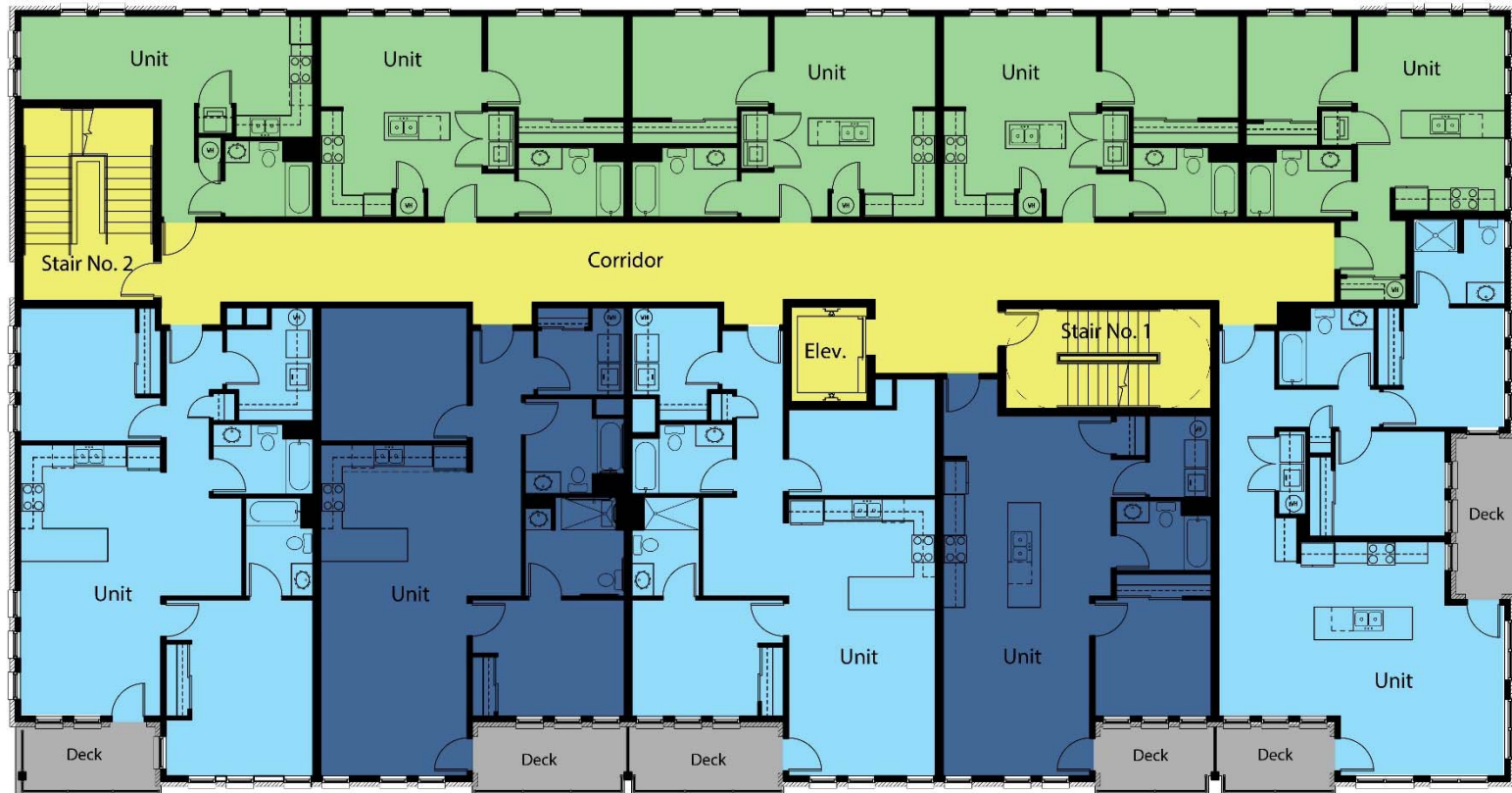
# Fairhaven Tower

## Level - 1

Floor Plan

- Commercial Space
- Circulation Space
- Public Space
- Mechanical Space





**Fairhaven Tower**  
Levels 2 - 4  
Floor Plan







Fairhaven Tower  
Level - 5  
Floor plan











































