
Medical Design Forum: Balancing Costs & Quality in an Evolving Landscape

Thursday & Friday, February 9-10, 2017 | Renton Pavilion, 233 Burnett Ave S, Renton | 98057

** all sessions/speakers subject to change*

This year's Medical Design Forum + Project Tour explores how tightening budgets impact health care providers and their capital projects. Providers face a new reality of performance metrics affecting revenue streams; they seek insight into long term patient flow, equipment costs, and facility use to navigate an uncertain future. Amid this change, providers turn to non-traditional approaches and technologies for expansion and facility improvement. In this evolving landscape, design professionals are well-suited to partner with owners and facilities managers to build for an uncertain fiscal future with economical and high quality designs. This two-day forum features a keynote address, panel presentations, an expo with demonstrations and presentations of emerging prefabrication and modeling technologies, and a tour of an award-winning, adaptive reuse project – Seattle Children's South Clinic in Federal Way.

THURSDAY – FEBRUARY 9, 2017

8:00 – 8:30 REGISTRATION + LIGHT BREAKFAST

8:30 – 8:45 PROGRAM: WELCOME + INTRODUCTIONS
Cassie Blair | AIA Seattle, Program Manager

MEDICAL DESIGN FORUM PLANNING TASK FORCE

CHAIR: Lois Broadway, AIA | Principal at TGB Architects

Dale Anderson AIA | Principal at Salus Architecture & Past Chair, Architecture for Health Panel

David Frum AIA | President at Salus Architecture

Michael Corbett | Architectural Product Specialist and Engineer of Capital Equipment at Hill-Rom

Julie Randolph | Intern Healthcare Architect at ZGF Architects LLP

Ryan Ramsey | Medical Planner at Perkins + Will

Susan Upton | Senior Plans Reviewer, Construction Review Services at Washington State Department of Health

Jessica Wiebe | Project Manager, GLY Construction

8:45 – 9:30 AHP + DOH Updates

Erin Couch | Chair, Architecture for Health Panel & Senior Director, Providence Health Services

John Williams | Program Manager, Construction Review Services, Washington State Department of Health

9:30 – 11:15 MAKING IT PENCIL: BALANCING EXPERIENCE, OUTCOME & PERFORMANCE WITH APPROPRIATE RESOURCES AND COSTS

Kimberly McHugh | Senior Construction Manager, Western Washington, Providence Health & Services

Hillary Altmann | Director of Institutional Planning, Providence Health & Services

Eddie Swafford | Sr. Strategic Partner, IS Services, Providence Health & Services

Melissa McHugh Cate | System Administrative Director of Women's Health, Pediatrics, Orthopedics and Advanced Surgical Services, Swedish Medical Center

Moderator: Lois Broadway, AIA | Principal, TGB Architects

11:15 – 11:30 BREAK

11:30 – 12:30 VIRTUAL REALITY – THE FUTURE OF PLANNING

Russell Alford | Business Manager, Turner MRS

Steve Shearer | Senior Project Manager, Turner MRS

Linda Balabuch | Senior Project Manager, Turner MRS

Steve Ross | Medical Equipment Planner, Turner MRS

12:30-1:30 LUNCH

DOH Staff Available for Project Questions

Medical Design Forum: Balancing Costs & Quality in an Evolving Landscape

Thursday & Friday, February 9-10, 2017 | Renton Pavilion, 233 Burnett Ave S, Renton | 98057

** all sessions/speakers subject to change*

- 1:30 – 3:15** **FRUGAL, FLEXIBLE, FAST = F³ – THE NEW SUCCESS FORMULA FOR HEALTHCARE FACILITIES, A CASE STUDY OF EVERGREEN HOSPITAL’S NEW PATIENT FLOORS**
Dale Anderson | Principal, Salus Architecture
Kristin Moore | Director of Healthcare, DIRTT
Mike Iannone | Factory Rep and Technical Expert, DIRTT
Craig Greene | Vice President of Operations, Lydig Construction
Kiel Lunsford | Project Manager, Lydig Construction
Diann Bagley | Medical Planner, Evergreen Hospital
Daniel Perry | Project Manager, Evergreen Hospital
- 3:15 – 3:30** **BREAK**
- 3:30-4:45** **TECHNICAL AND PRE-FAB MINI EXPO & PRESENTATIONS**
3:30 – 3:50 | WITTROCK HEALTHCARE
3:55 – 4:15 | TURNER MRS
4:20 – 4:40 | DIRTT
MEDICAL DESIGN FORUM SPONSORS
- 4:45 – 5:00** **QUESTIONS + CLOSING REMARKS**

Medical Design Forum: Balancing Costs & Quality in an Evolving Landscape

Thursday & Friday, February 9-10, 2017 | Renton Pavilion, 233 Burnett Ave S, Renton | 98057

** all sessions/speakers subject to change*

Forum Panelists:



Russell Alford | Business Manager, Turner MRS

Russ Alford is the General Manager for the Turner Medical & Research Solutions business unit (Turner MRS). He is responsible for the effective management and business development of medical equipment planning and management projects across the U.S. During his career, he has been involved with the company's retail, education and healthcare market segments, and has lead over \$2 billion of design and construction efforts for projects across the US. Mr. Alford joined Turner in 1982.



Hillary Altmann | Director of Institutional Planning, Providence Health & Services

Hillary leads the development of strategic facility master plans and capital asset strategies for PH&S in Washington, Montana, and Alaska. In this role, she collaborates with Finance, Strategy, and Hospital Leadership to ensure that long-range capital investments align with organizational priorities and the needs of the community. Hillary provides oversight to ensure facilities and capital are used to advance strategic plans. Prior to Providence, Hillary worked at a Management Consulting Firm specializing in Healthcare Facility & Capital Assets and as a Strategic Space Planner at a major Academic Medical Center.



Dale Anderson | Principal | Salus Architecture

Dale Anderson has led projects with major healthcare institutions in the Puget Sound region and beyond. Dale blends the concepts of lean functional flows of work, evidence-based design and sustainability into an aesthetically pleasing environment, achieving a combined efficient and comfortable environment. He mentors his team members to become more effective healthcare designers through deeper understanding of the healthcare processes and business. His professional affiliations include the American Institute of Architects, AIA Academy of Architecture for Health, AIA Architecture for Health Panel, Washington State Chapter of ASHE, U.S. Green Building Council, and Cascadia Green Building Council. He is also a Lean Six Sigma Black Belt, with an MBA in Sustainability from the San Francisco Institute of Architecture and a Bachelor of Science from the University of Nebraska.



Diann Bagley RN, BSN | Medical Planner, Evergreen Hospital

As a registered nurse with over 12 years of medical planning experience and 30 plus years of hands-on patient care, Diann Bagley is a valuable commodity in the world of healthcare planning and design professionals. Early in her career, Evergreen's administrative leaders recognized her abilities to "see" solutions for developing functional spaces and encouraged her to shift focus to the medical planning arena. Fiercely committed to creating "work spaces that work", she has lead major projects from design to reality for Evergreen including:

- A 44,000 square foot Emergency Department in Kirkland and sister Freestanding Emergency Department in Redmond
- Three 32 bed medical-surgical nursing units and two 31 bed progressive care units
- Several ambulatory outpatient medical clinics

Diann received her favorite award in 2010 for "Nursing Excellence in Innovation and Creativity" for using her nursing experience to represent and assure that patients, their families and the needs of staff are never lost in the complexity of design and construction. She enjoys spending time with her husband, five children and thirteen grandchildren who are inspirational to her sense of caring, humor and learning to be patient with the process.

Medical Design Forum: Balancing Costs & Quality in an Evolving Landscape

Thursday & Friday, February 9-10, 2017 | Renton Pavilion, 233 Burnett Ave S, Renton | 98057

** all sessions/speakers subject to change*



Linda Balabuch | Senior Project Manager, Turner MRS

Linda is a Senior Project Manager for Turner MRS out of the Seattle office. She leads her projects with a passion that can include the full array of Medical Equipment Services: Equipment Planning, Procurement, Coordination, Installation and Transition services. She complements the Project team by adding 35 years of extensive experience in Healthcare, in both the clinical and business environments, including seven years practicing as an Orthopedic Physician's Assistant and fifteen years working for major medical device companies in Education/Training, Sales and Management. She has managed healthcare projects across the country with a primary focus in the Western United States. Years of medical experience across multidiscipline areas in Healthcare provides her with the unique ability to manage Hospital projects effectively and efficiently, assisting to bridge potential gaps between clinical needs, design and construction.



Craig Greene | Vice President of Operations, Lydig Construction

Craig has worked on many healthcare projects in the Puget Sound area including projects for Virginia Mason, The Seattle Cancer Care Alliance, Group Health, Evergreen Health and UW Medical Center. Greene has been in the construction industry for 25 years, with stints at Taisei Corp. in Tokyo, Saudi Arabia and Indonesia, and Turner Construction Co. locally. He holds an MBA and a construction management certificate from the University of Washington, a bachelor's degree in civil engineering from Lehigh University, and a Lean Six Sigma Black Belt from Villanova University.



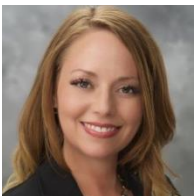
Michael Iannone | Factory Rep and Technical Expert, DIRT

Michael joined DIRT Environmental Solutions in January 2005 shortly after its inception. As a leading applications specialist, Michael has worked on several projects pushing the envelope for DIRT solutions in the healthcare and technology markets. For 23 years prior, he was founding and managing partner of the Iannone Group, a TI design and consulting firm located in Salt Lake City doing business with Fortune 100 Companies in the Western US. Mike is a specialist in Interior Architecture, prefabricated construction systems and performance specifications.



Kiel Lunsford | Project Manager, Lydig Construction

As a member of Lydig's Special Projects Group, Kiel has 12 years of industry experience focused on technically challenging projects with an emphasis on healthcare, lab, and biotechnology projects. LEED BD+C and DBIA Accredited, Kiel holds a BS in Construction Management and a Certificate in Commercial Real Estate Development from the University of Washington. The EvergreenHealth Progressive Care Project is Kiel's first project using the DIRT modular partition system in a medical environment.



Kimberly McHugh | Senior Construction Manager, Providence Health & Services

Kimberly is a construction management professional with over 15 years of experience providing leadership, strategic directive, and technical guidance for the execution of complex construction projects, primarily in the healthcare market. She is the senior construction lead for Providence Health & Services in Western Washington, where she heads a team responsible for facilitating collaboration across all business and clinical pillars in the effective delivery of the construction projects within her region. Kimberly's career has been built in the Pacific Northwest, where she previously managed healthcare projects as a general contractor. She currently sits on the board of Healthcare Institute, and IFMA Alliance Partner.

Medical Design Forum: Balancing Costs & Quality in an Evolving Landscape

Thursday & Friday, February 9-10, 2017 | Renton Pavilion, 233 Burnett Ave S, Renton | 98057

** all sessions/speakers subject to change*



Melissa McHugh Cate MBA, MN, RN | System Administrative Director of Women's Health, Pediatrics, Orthopedics and Advanced Surgical Services, Swedish Medical Center

Melissa is a seasoned healthcare administration professional with 15 years of experience in the industry. Melissa has held roles in bedside clinical care, clinical education, management, business operations and strategic planning. Currently, Melissa serves as the administrative professional responsible for growth, optimization and strategic direction of the Women's Health, Pediatric, Orthopedic and Advanced Surgical Services Enterprises at Swedish Medical Center. She also serves as the Operational Director for

Respiratory Services, Maternal Fetal Medicine, Perinatal Behavioral Health and, The Lytle Center and Pediatric Therapy Services. Additionally, Melissa provides leadership and guidance on clinical and business decisions through the Providence Clinical Program Services Department, ensuring coordinated efforts in quality, strategy, program development and resource utilization across sites in Washington, Montana, Alaska, Oregon and California.



Kristin J. Moore, LEED AP | Director of Healthcare, DIRT

As DIRT's Director of Healthcare, Kristin Moore understands the demands of 21st century healthcare environments and how manufactured construction meets the needs of various healthcare audiences.

Kristin is an advocate of clean and rapid construction that is cost-effective, adaptable and focuses on patient-centered design. She works with healthcare systems, architects, designers and general contractors around the world to ensure DIRT solutions benefit patients and their families, medical staff, facility

managers and owners. She travels extensively, supporting DIRT's teams and educating audiences on manufactured healthcare construction, and delivering CEU-approved presentations for AIA and IIDA. She is also a regular keynote speaker. One of DIRT's first employees, an industry veteran and a LEED AP since 2004, Kristin also promotes the sustainability of DIRT solutions and demonstrates how they meet and often exceed LEED and other green building rating systems. She has been involved in numerous LEED projects across Canada and the United States.



Daniel A. Perry RA, LEED AP BD+C | Project Manager, Evergreen Hospital

Dan is a construction project manager at EvergreenHealth, in Kirkland Washington. He is registered architect, a general contractor and a LEED professional. He is an honors graduate from the New Jersey Institute of Technology, and has certificates from New York University and University of Washington in construction management and commercial real estate respectively. Additionally Dan is a Board Member of HomeSight, a non-profit organization involved with "Creating Homeowners...Building Communities" in Seattle.



Steve Ross | Medical Equipment Planner, Turner MRS

Steve is a Medical Equipment Planner for Turner MRS based out of the Seattle office. In his 10 years with Turner MRS, he has extensive experience on Healthcare and Research & Lab projects in Planning Equipment, as well as providing Procurement services and the role of Field Operations Engineer on construction projects. Steve's project experience ranges from Hospital renovations to free standing surgery centers, \$1 billion Hospital expansions, as well as bio-tech research labs.

Medical Design Forum: Balancing Costs & Quality in an Evolving Landscape

Thursday & Friday, February 9-10, 2017 | Renton Pavilion, 233 Burnett Ave S, Renton | 98057

** all sessions/speakers subject to change*



Steve Shearer | Senior Project Manager, Turner MRS

Steve is a Senior Medical Equipment Planner and Director of Planning. He has been involved in the healthcare industry for over 30 years, starting out in Interventional Radiology. For the past 24 years he has focused on providing specialized Medical Equipment Planning and Consulting services. Steve has successfully managed projects in various stages – Programming, Design, Procurement, Construction, Installation and Start-up. His project experience ranges from small renovations, to 1,600 bed green field hospitals. They have been located in the United States, Middle East, South America, New Zealand and the Philippines.



Eddie Swafford | Sr. Strategic Partner, IS Services, Providence Health & Services

Eddie is the IS Executive for the Western Washington Business and Operational leadership, where he is responsible for the development and implementation of appropriate service delivery models for core functionalities. He is also primary leader for the oversight and management of relationships between IS and individual business units and markets to ensure the needs of the customer are met. Eddie leads the local delivery and performance of the Desktop, Telecommunications and Network Services delivery teams while ensuring seamless IS customer experience by understanding the business requirements and monitoring the performance of the local IS presence.