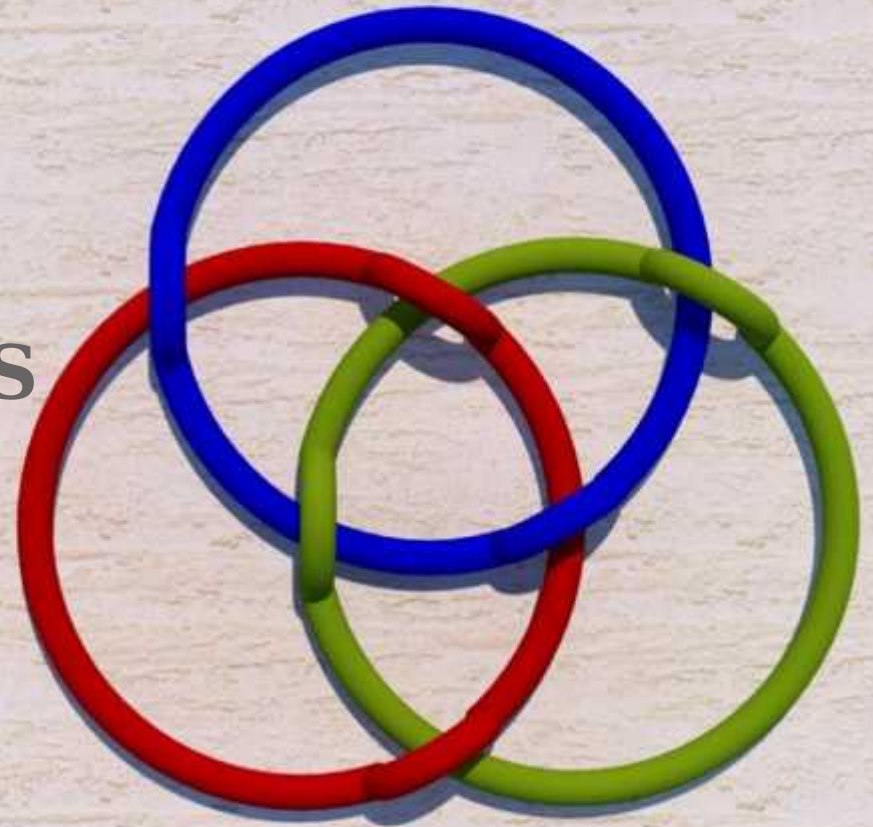


# THE IMPORTANCE OF CLADDINGS

**Mark R. Morden, AIA, CCS**

Associate Principal

Wiss, Janney, Elstner Associates, Inc.



## BUILDING ENVELOPE FORUM

WHERE DESIGN MEETS PERFORMANCE

December 9, 2014



**The Importance of Claddings:  
They keep water and air infiltration from  
the interior of the building**





**MIT Stata Center**



**“These things are complicated, and they involved a lot of people, and you never quite know where they went wrong.”**



**Disagree**

“These things are complicated, and they involved a lot of people, and you never quite know where they went wrong.”





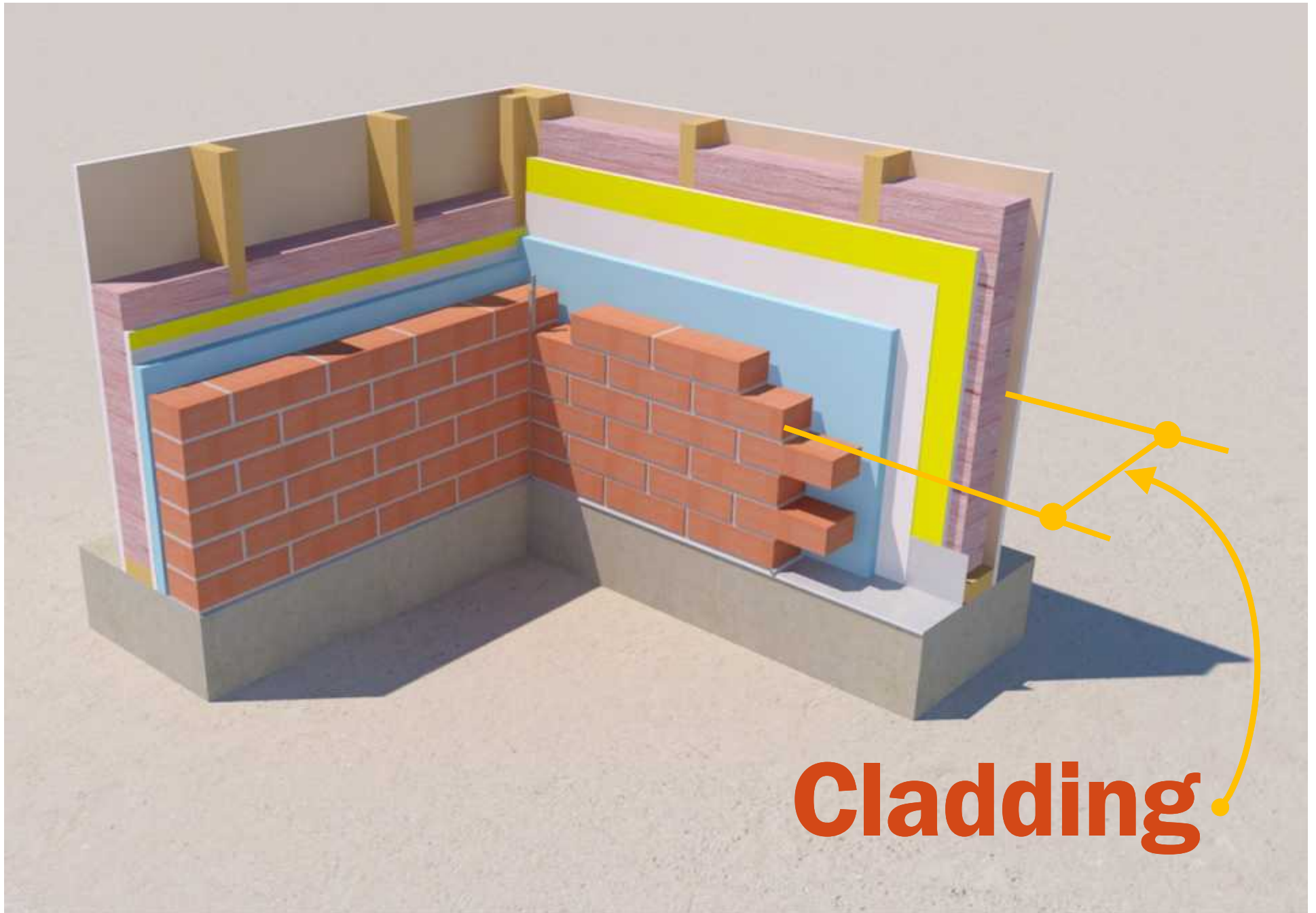


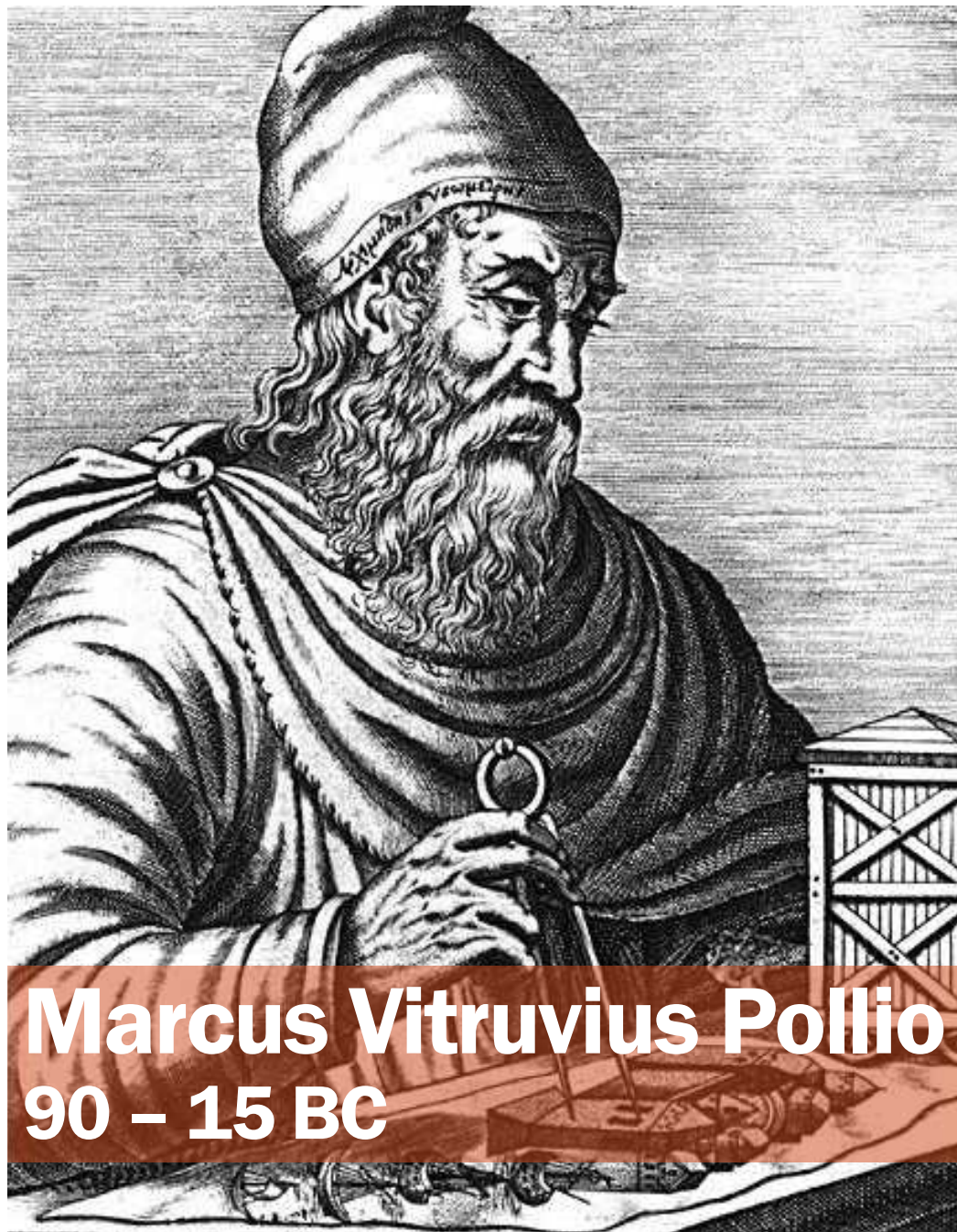




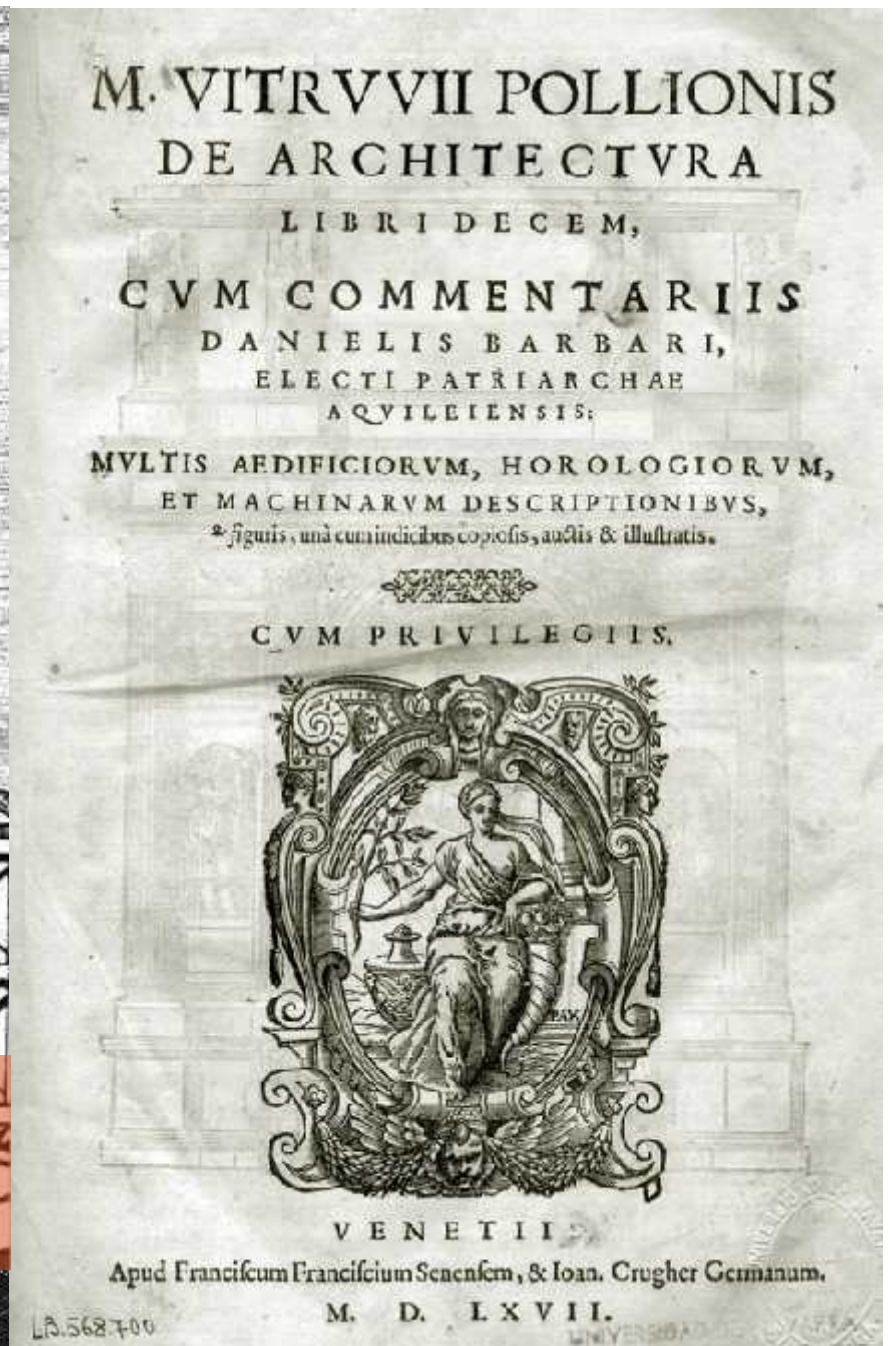








**Marcus Vitruvius Pollio**  
**90 – 15 BC**







**Firmitas**  
(structure)



**Utilitas**  
(utility)



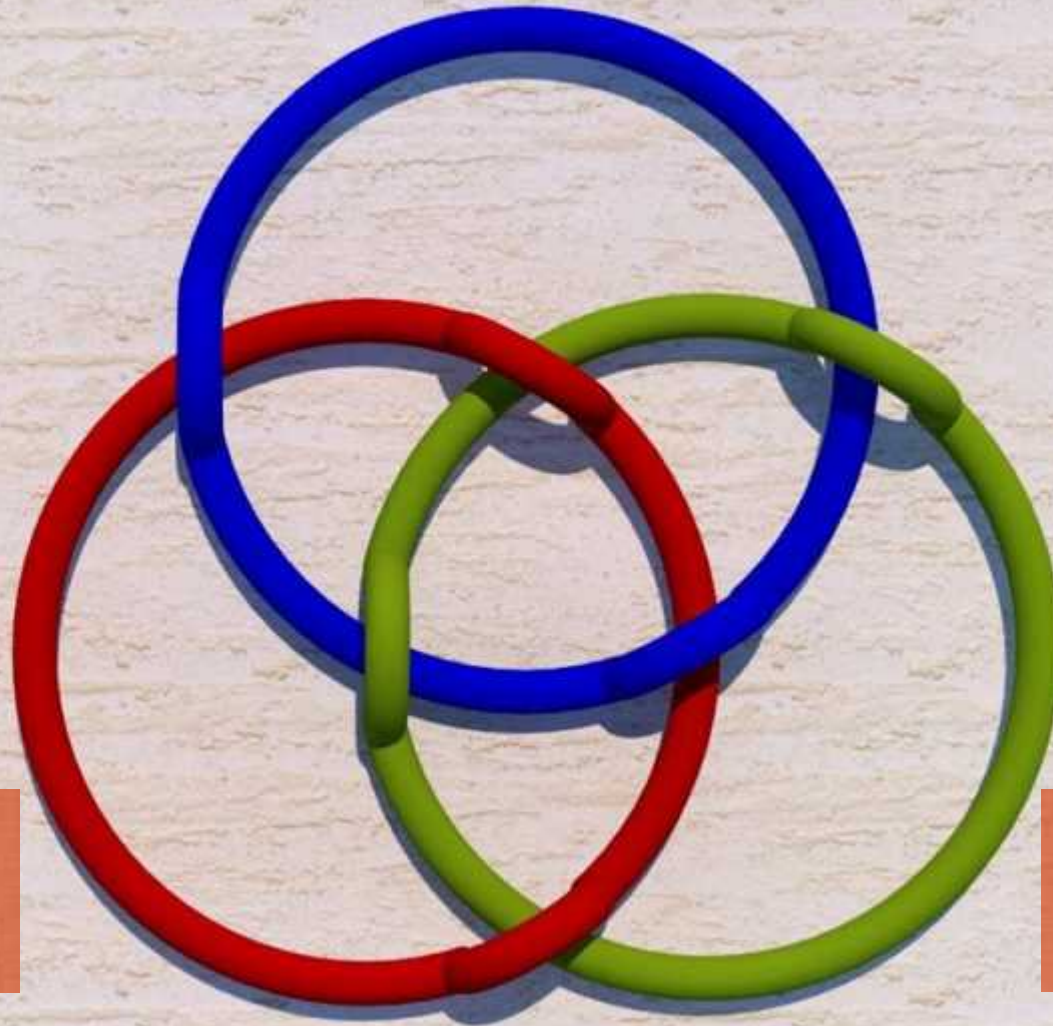
**Venustas**  
(beauty)



**Firmitas**  
(materials)

**Utilitas**  
(control)

**Venustas**  
(aesthetics)













**What the Ancients Knew - Rome**  
**Discovery Channel, 2008**

**Roman mortar: an early WRB**



**Interior wall**

**Vent**

**Wall cavity**

**Burnt brick  
render coating**

**Plaster**

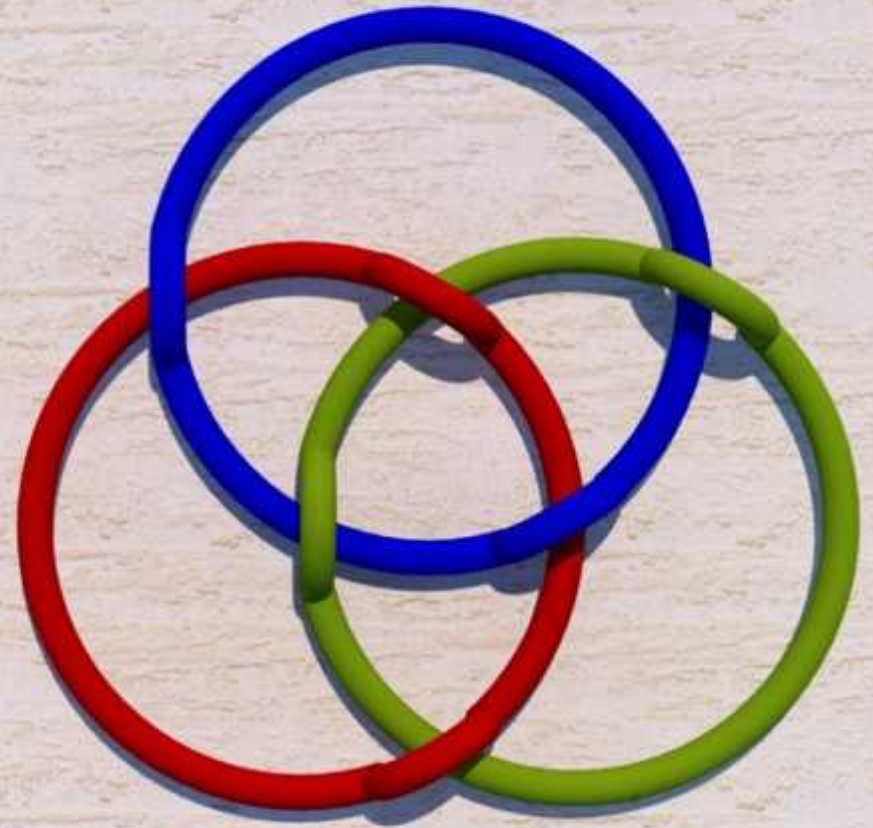
**Vent**



**Substantial and  
durable**

**Relative comfort**

**A canvas for  
expression**





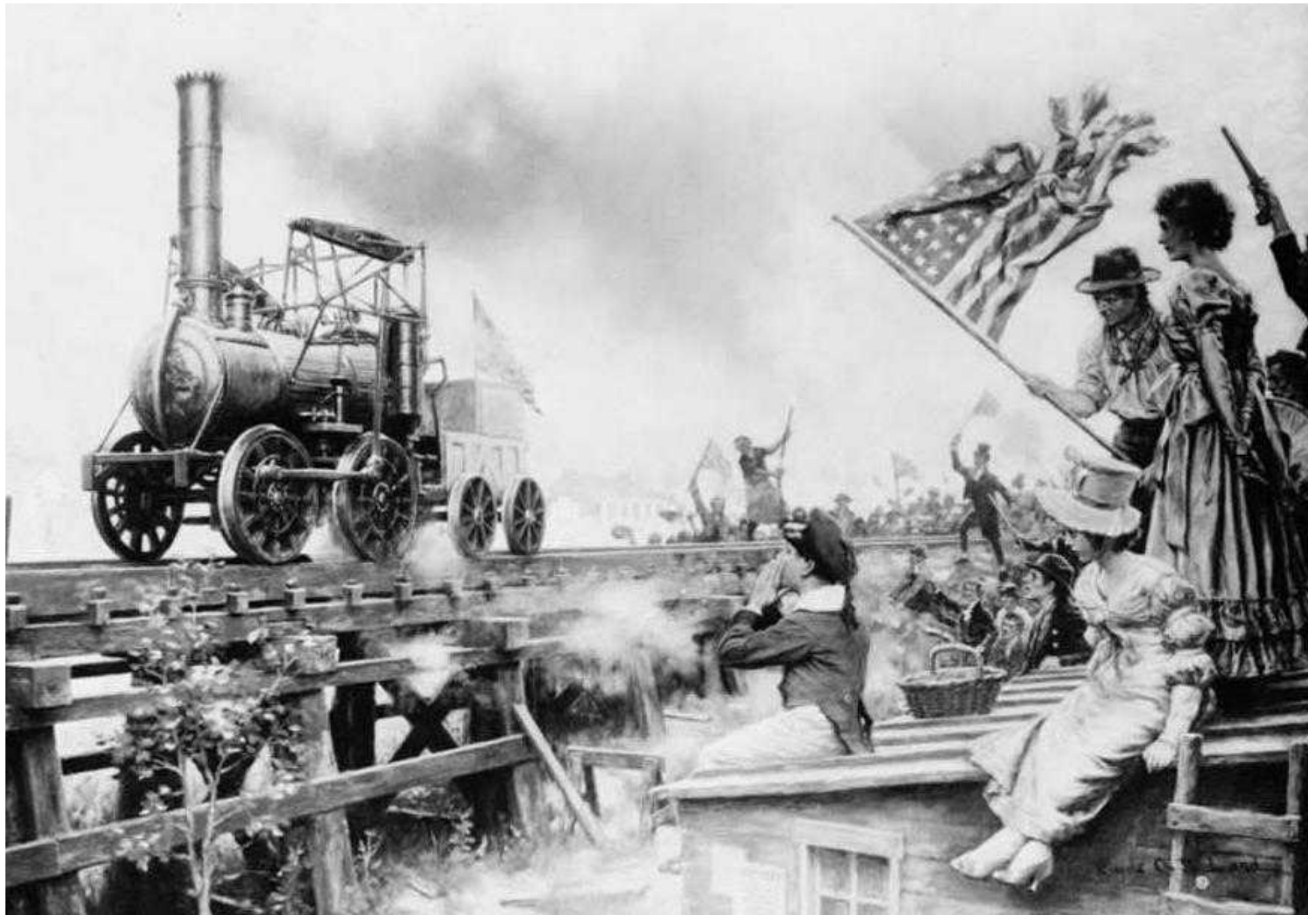




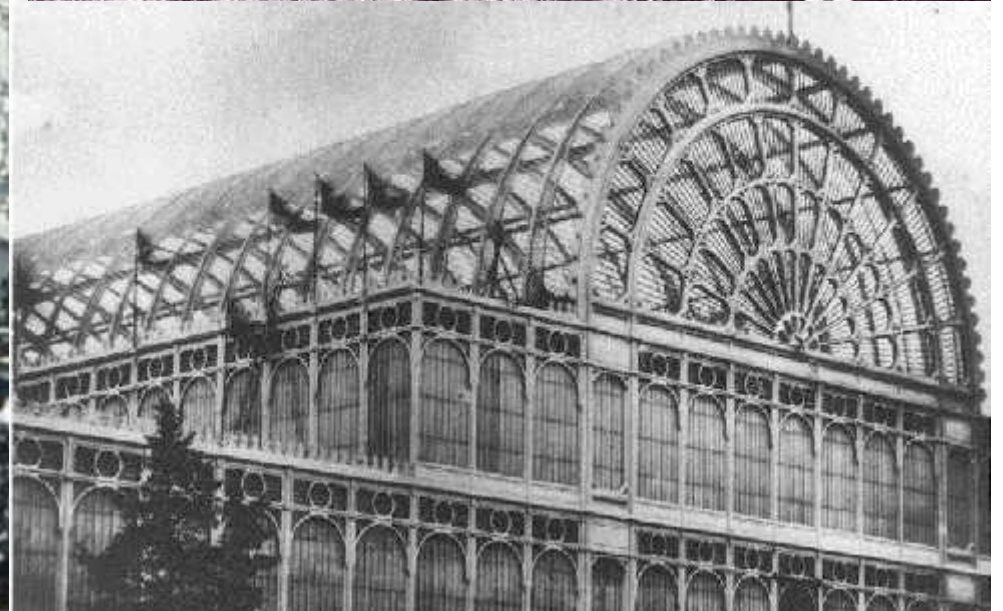
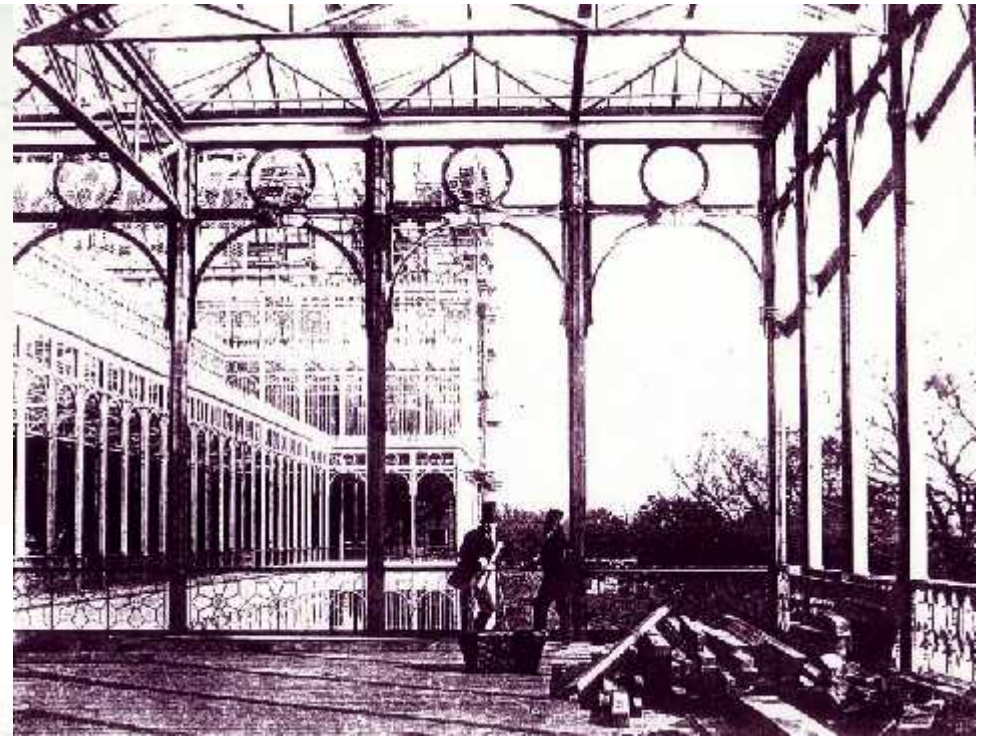
















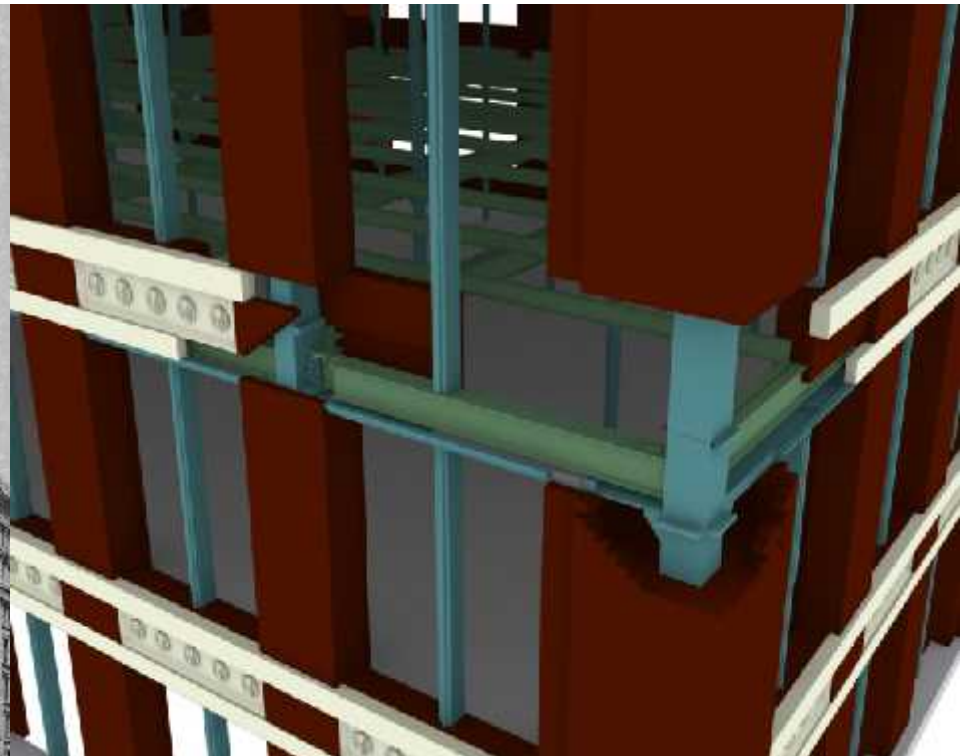


528. PARIS — Galerie des Machines

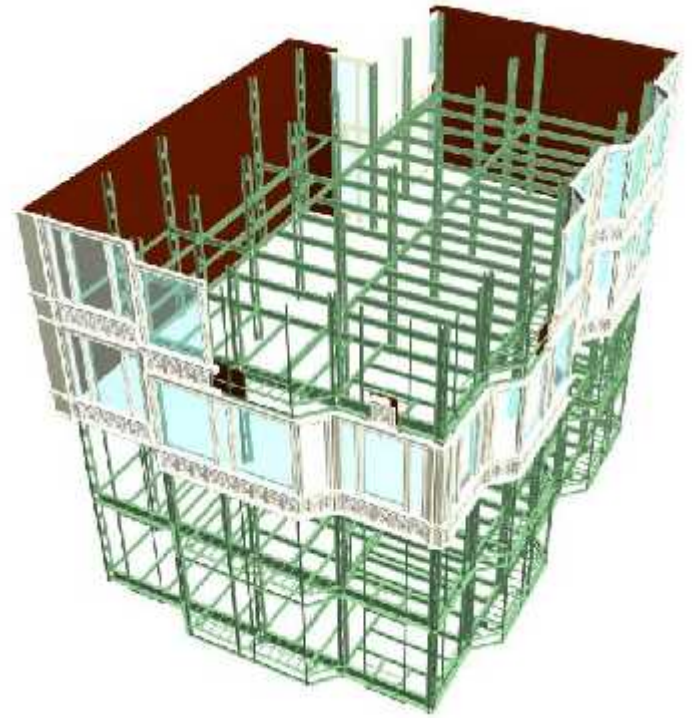


















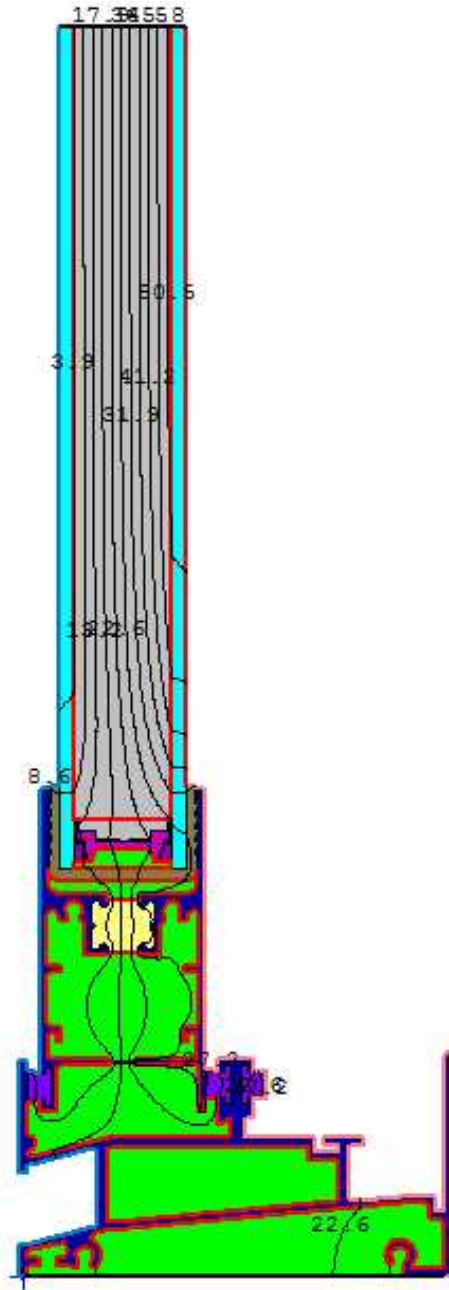








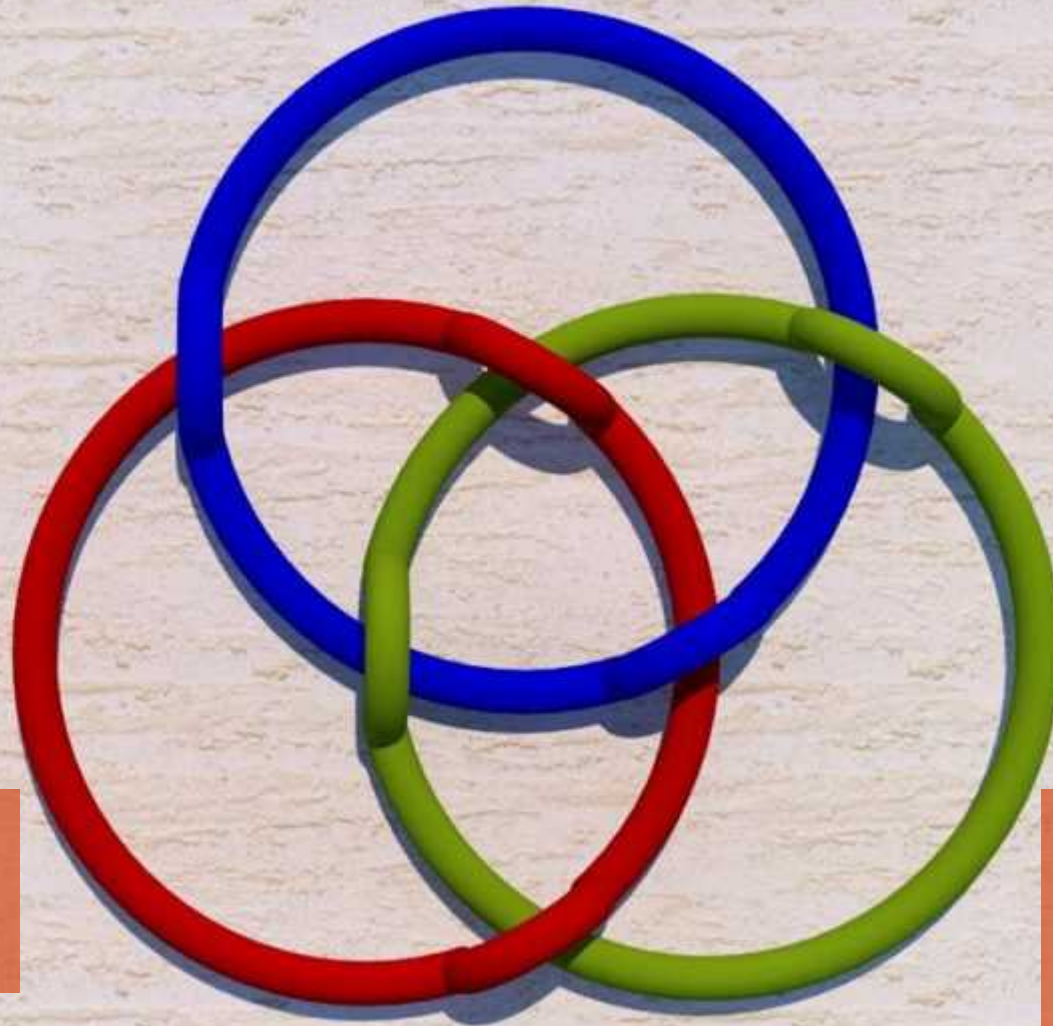




**Firmitas**  
(cladding / structure)

**Utilitas**  
(MEP et al.)

**Venustas**  
(material/  
spacial  
design)











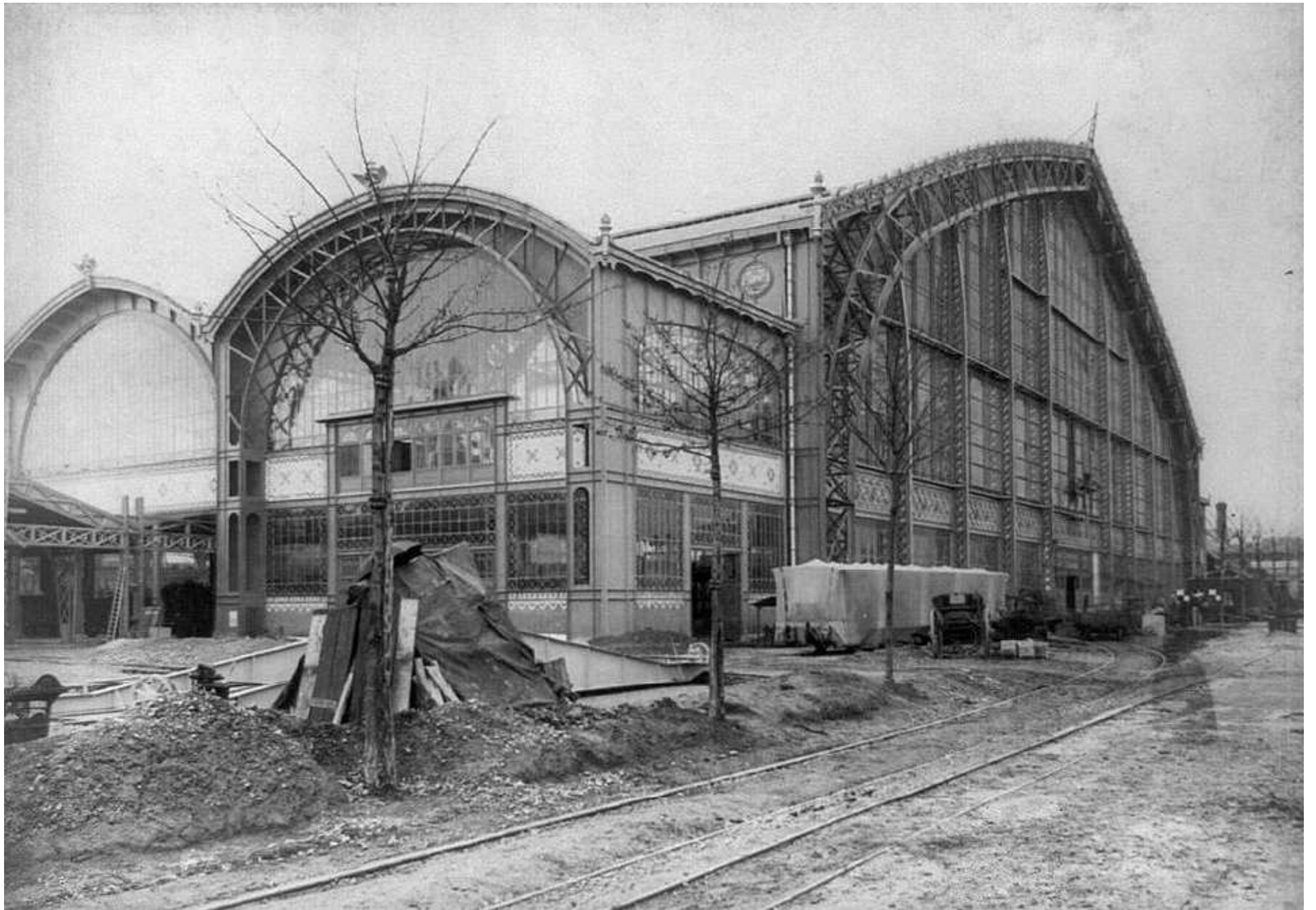
































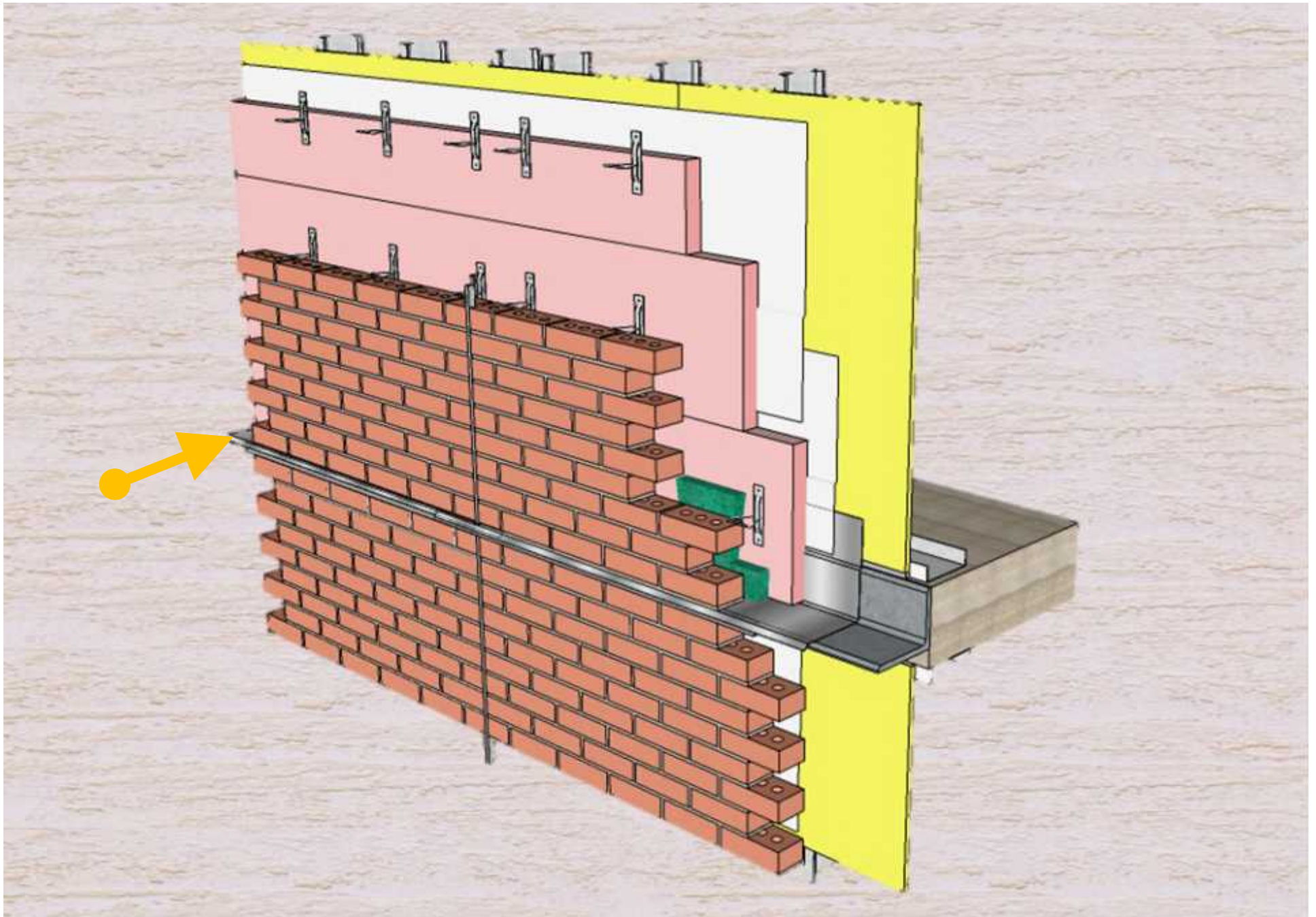






**Al Bahar Towers, Abu Dhabi**



















# THE IMPORTANCE OF CLADDINGS

**A Need**

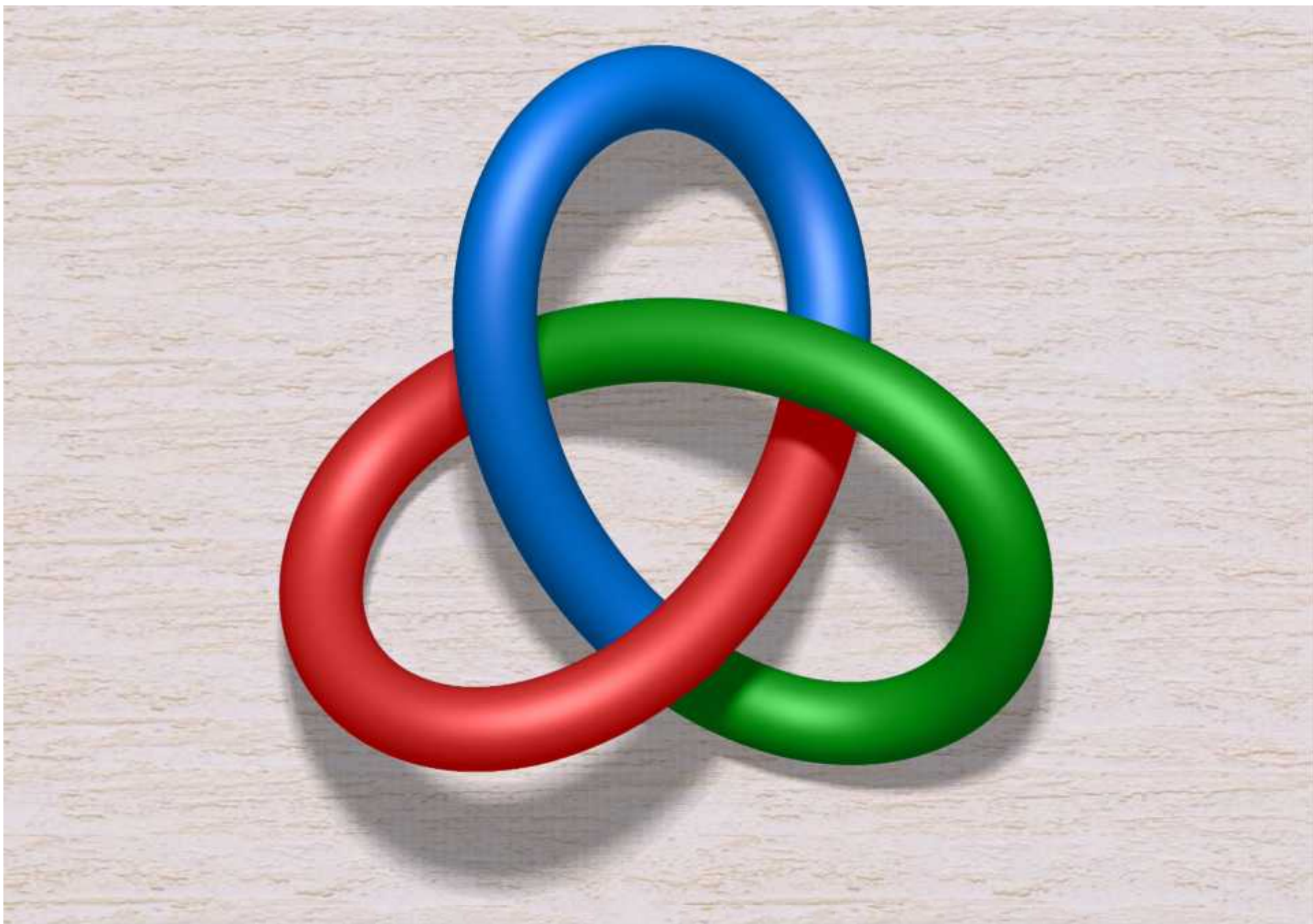
**Materials  
Solution**

**First  
Installation**

**Approval**

**Beauty  
Added**

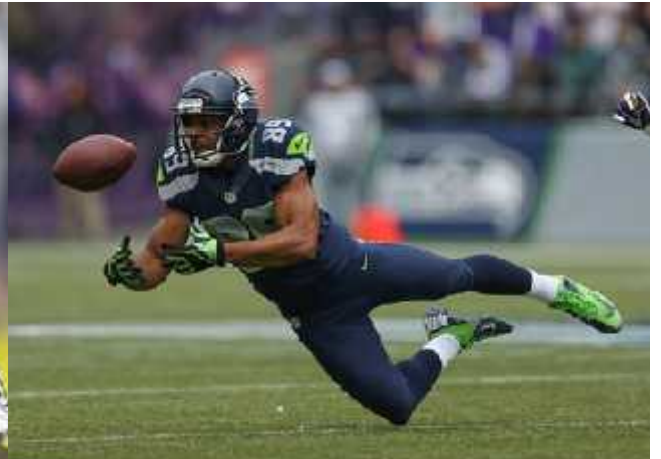




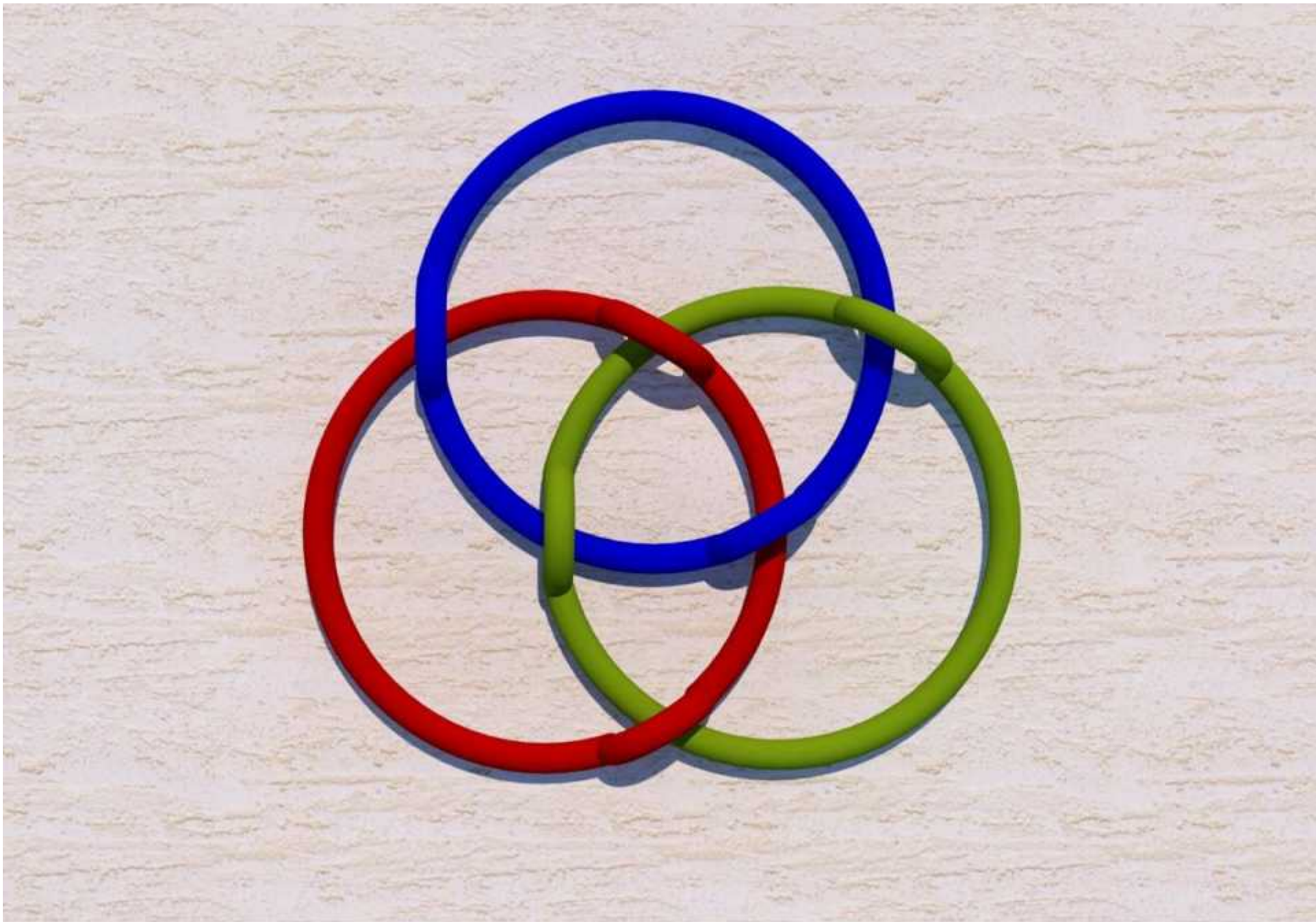






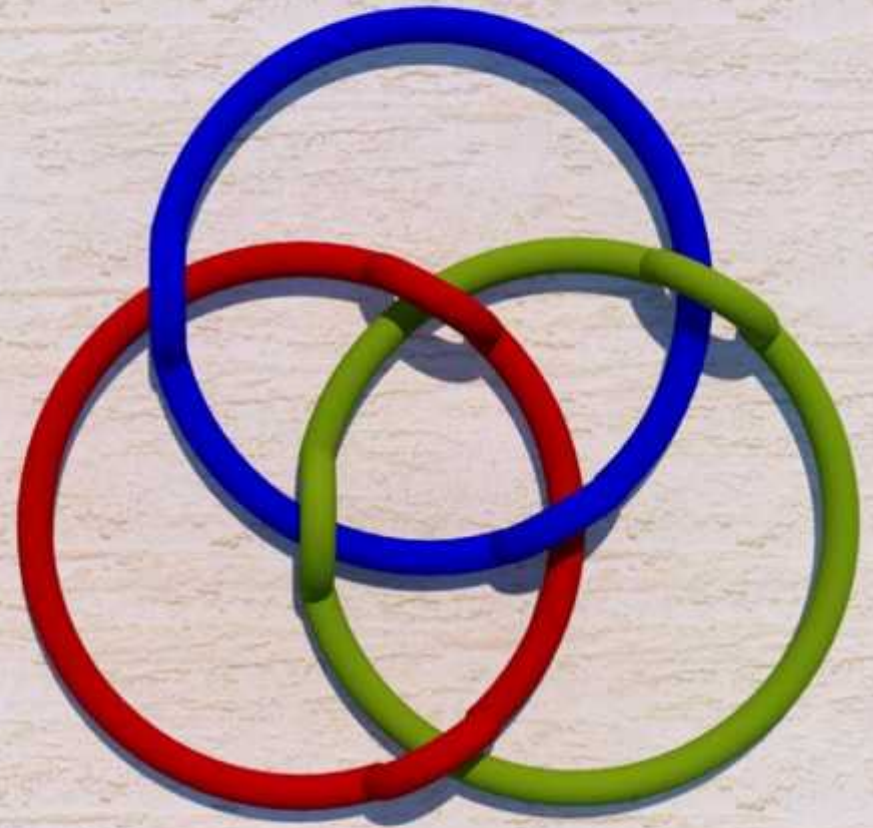








# THE END



**WJE**

**Mark R. Morden, AIA, CCS**

Associate Principal

Wiss, Janney, Elstner Associates, Inc.

**aia**seattle